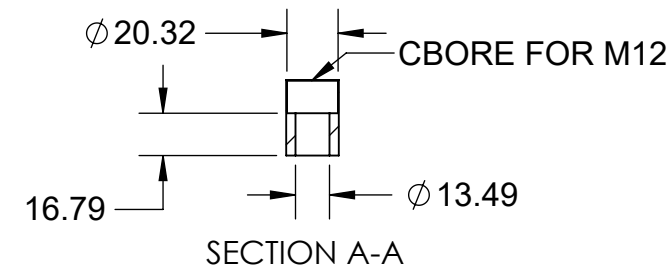
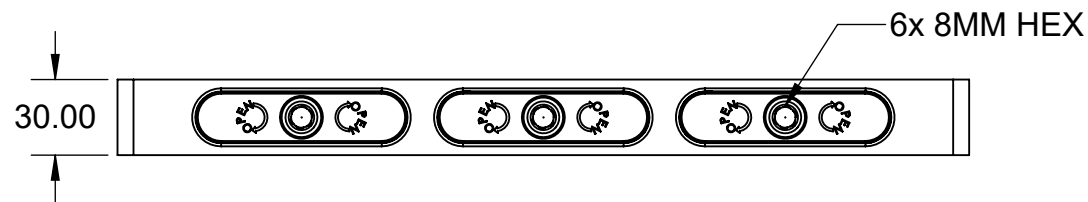
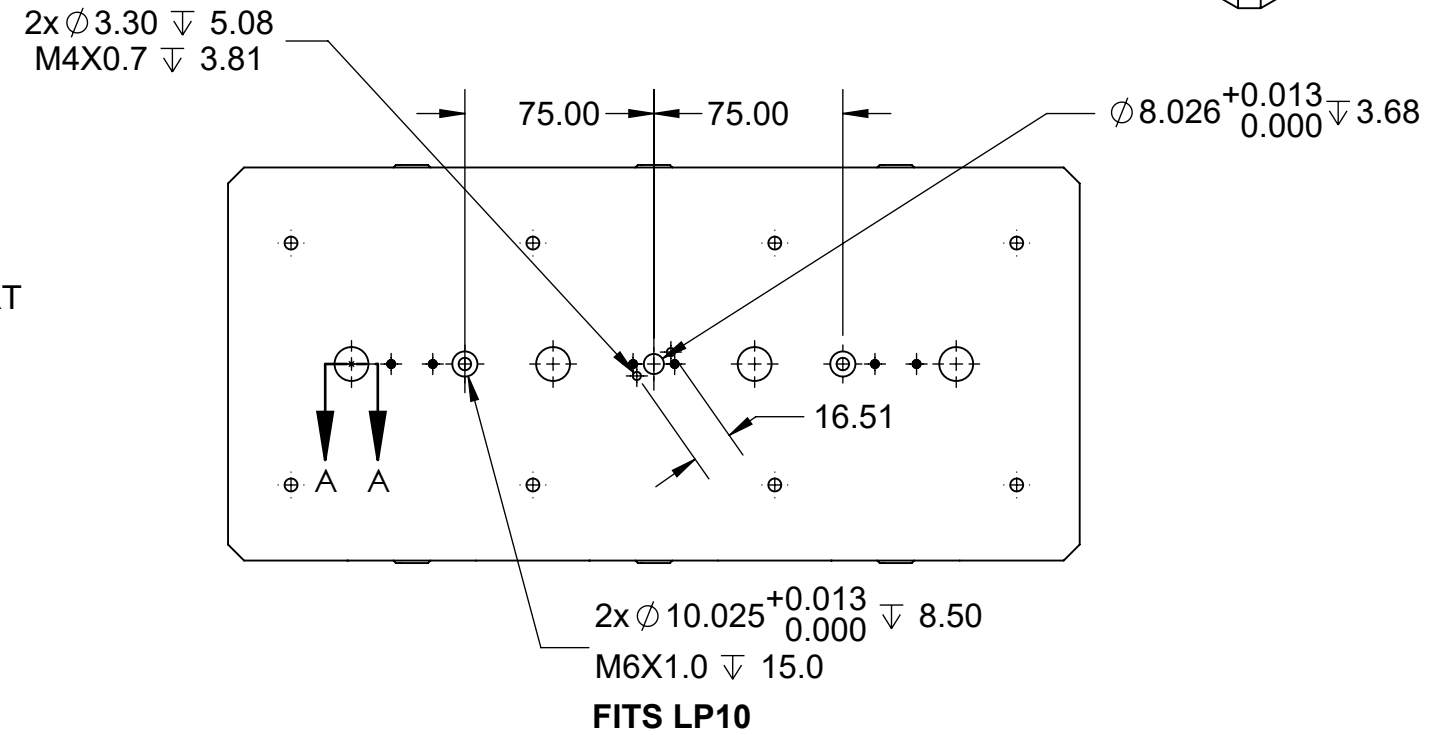
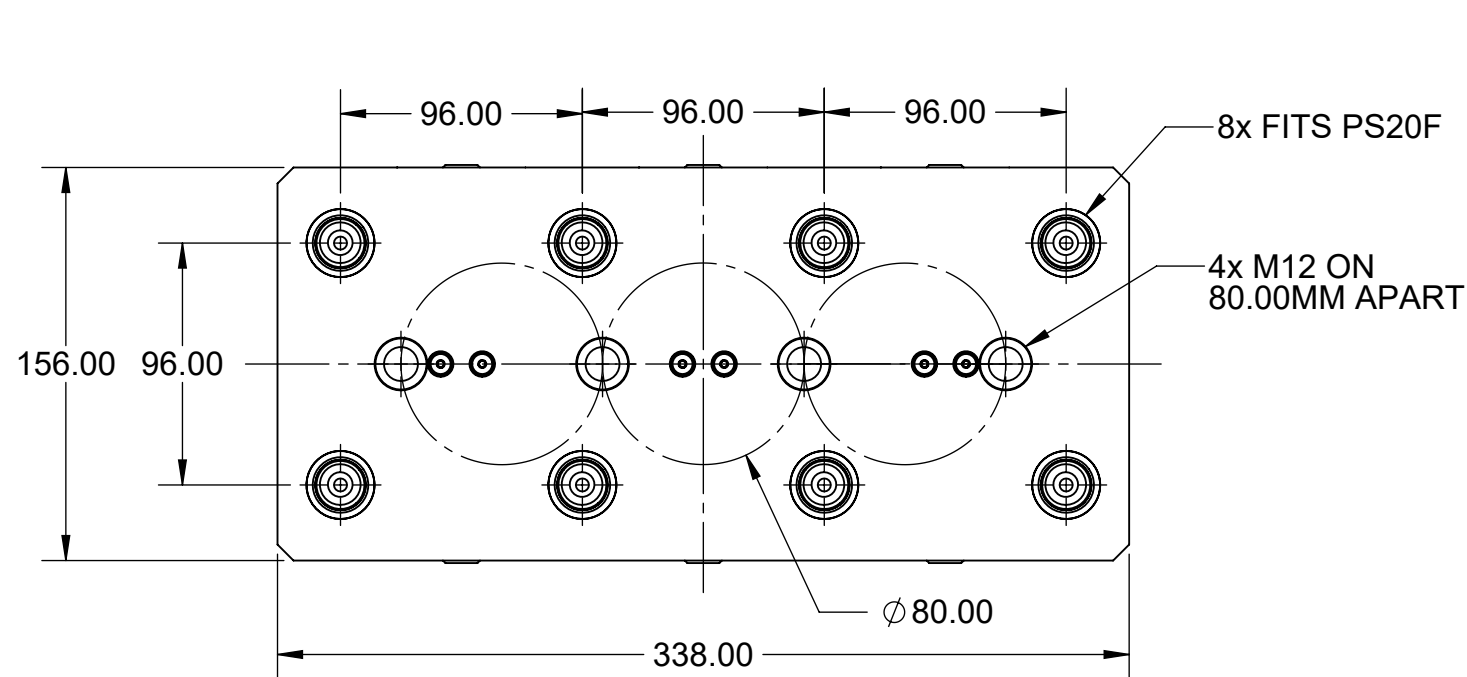
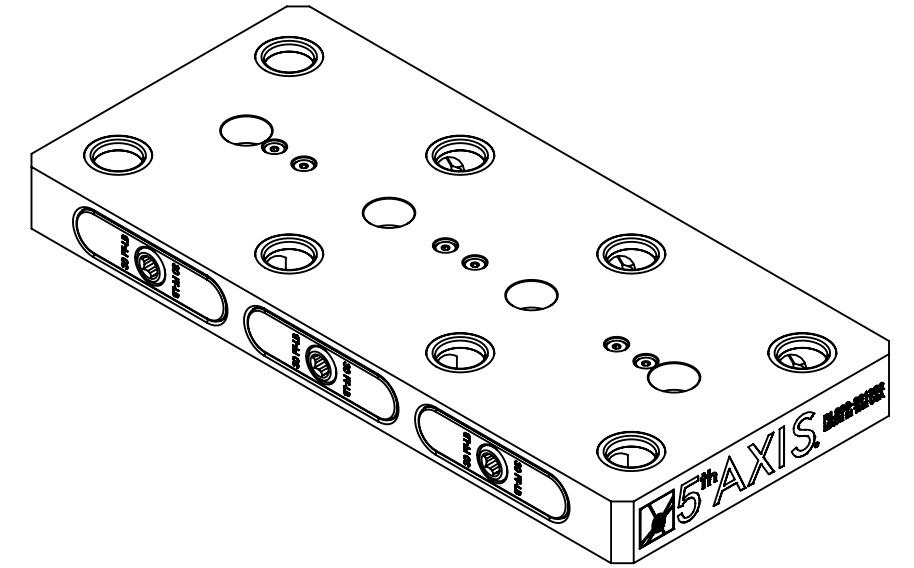


MATERIAL:
RL96A-3613S2: 6061 ALUMINUM BODY

RL96A-3613S2



MILLIMETER <small>DRAWN IN ACCORDANCE WITH ASME Y14.5-2009</small> <small>WWW.5THAXIS.COM</small> <small>7140 ENGINEER ROAD SAN DIEGO, CA 92111</small> <small>P (858) 505-0432 F (858) 505-9344</small>	TOLERANCES <small>UNLESS OTHERWISE SPECIFIED</small> x ± 0.1 .xx ± 0.01 .x ± 0.05 .xxx ± 0.005 ANGULAR ± 0.5° <small>THIRD ANGLE PROJECTION</small>			
	<small>DESCRIPTION</small> ROCKLOCK™ 96MM MULTI-POSITION LOW-PROFILE BASE	<small>SIZE</small> B	<small>PART NO.</small> RL96A-3613S2	<small>REV</small> A
<small>DO NOT SCALE DRAWING</small>		<small>SCALE</small> 1:3	<small>WEIGHT:</small>	<small>SHEET 1 OF 2</small>

8

7

6

5

4

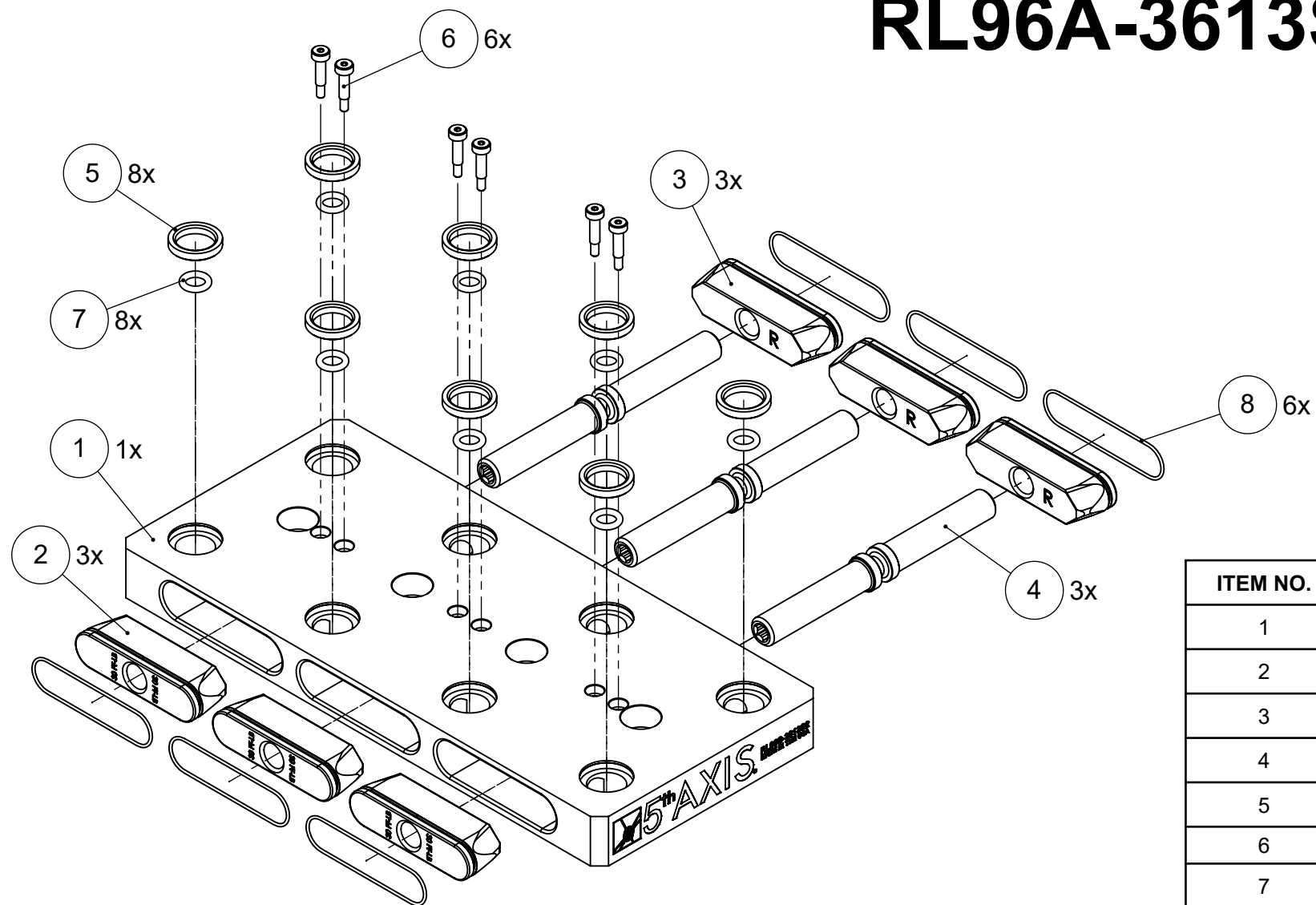
3

2

1

MATERIAL:
RL96A-3613S2: 6061 ALUMINUM BODY

RL96A-3613S2



ITEM NO.	PART NUMBER	DESCRIPTION	QTY.
1	RL96-1613S2A	ROCKLOCK™ BASE	1
2	RL96-2L	LEFT ROCKLOCK™ TRUCK	3
3	RL96-2R	RIGHT ROCKLOCK™ TRUCK	3
4	RL96-3	ROCKLOCK™ LEAD SCREW	3
5	27X20.DB	PRECISION BUSHING	8
6	SB54	SHOULDER BOLT	6
7	9452K183	BASE O-RING	8
8	9452K121	TRUCK O-RING	6
9	9750K73	PLASTIC PLUG (NOT SHOWN)	8

FOR REFERENCE ONLY - NOT FOR RESALE

MILLIMETER

DRAWN IN ACCORDANCE WITH
 ASME Y14.5-2009

WWW.5THAXIS.COM

7140 ENGINEER ROAD
 SAN DIEGO, CA 92111

P (858) 505-0432
 F (858) 505-9344

TOLERANCES

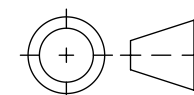
UNLESS OTHERWISE SPECIFIED

x ± 0.1 .xx ± 0.01

.x ± 0.05 .xxx ± 0.005

ANGULAR ± 0.5°

THIRD ANGLE PROJECTION



DESCRIPTION

ROCKLOCK™ 96MM MULTI-POSITION LOW-PROFILE BASE

SIZE

B

PART NO.

RL96A-3613S2

REV

A

DO NOT SCALE DRAWING

SCALE 1:3

WEIGHT:

SHEET 2 OF 2

8

7

6

5

4

3

2

1

D

D

C

C

B

B

A

A